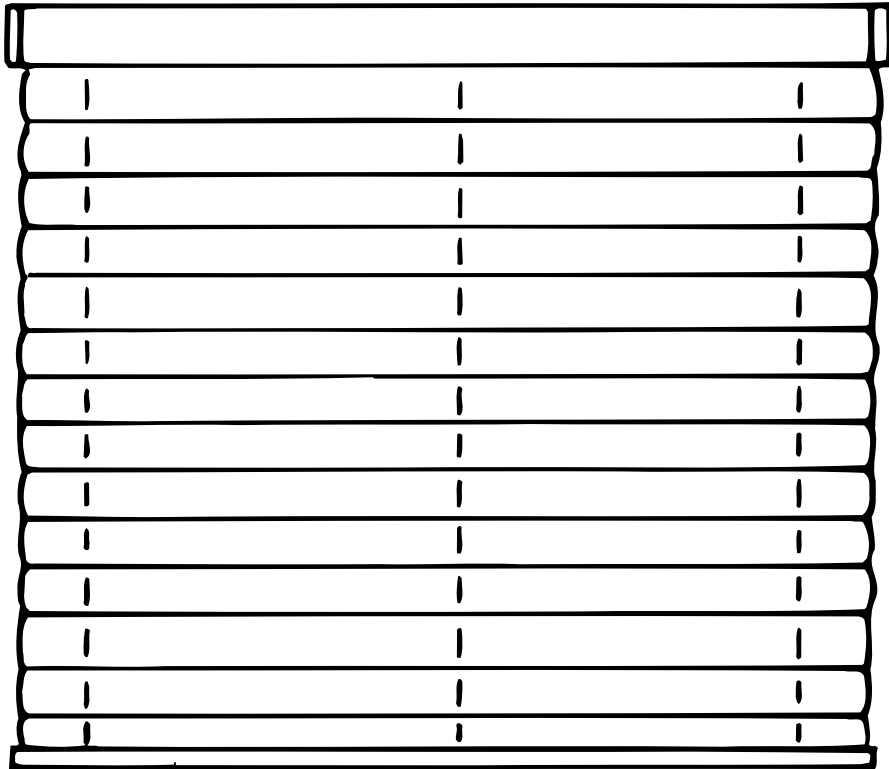


BTXTM



Installation Instructions for
TRS Lift/Tilt System

TRS Lift/Tilt

Tools Required:

Power Screwdriver

Extended Phillips
bit for the
power screwdriver

Needle Nose Pliers

Wire Cutters

Flathead Screwdriver

Small Phillips

Small Flathead

Test Cable

Allen wrench set

Screws & Anchors

Table of Contents

Installing the TRS Lift/Tilt System 3

Coupling the TRS Lift/Tilt System 4

Limit Adjustment Instructions & Maintenance 5

Basic Control Wiring

Switch 6

Infrared 6

Radio 7

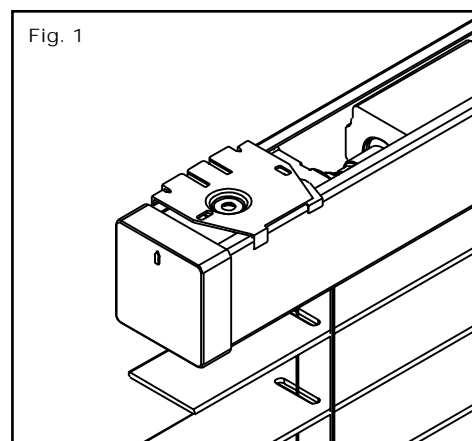
Warranty 8

Installing the TRS Lift/Tilt System

Ref. #	Description	Fascia System
A	Motor	
B	Hex Adaptor	
C	Tape Reel (2.6 or 7.6)	
D	Tape (2.6 or 7.6)	
E	Gear	
F	Bearing	
G	Grooved Pulley	
H	Set Collar	
I	Tilt Rod Cover	
J	Bracket	
K	End Caps	
L	Headrail	
M	Hex Shaft	

NOTE: Supplied brackets will accommodate either wall or ceiling mount applications. Due to the various building materials used in construction we do not supply the fasteners.

- For shades to operate properly, brackets must be level. Check to see if the surface on which the shades will be mounted is level; if not, shim the brackets to make them as level as possible. This step is crucial to the final product.
- Attach appropriate brackets to the headrail approximately every 20". NOTE: Make sure to match brackets up to the headrail, so that the gear housing or motor do not obstruct the bracket from properly attaching to the headrail.
- Position headrail in desired location and mark bracket mounting holes on wall or ceiling, depending on your specific application.
NOTE: The travel area of the shade or blind must be free from any obstructions such as door handles, window cranks, etc.
- For motor cord attachment: cord normally exits headrail at either the left, right or top of the headrail. If specified at time of order, pigtail may also exit through holes drilled in the front or back of the headrail. (In the event that you have a coupled system, please refer to additional instructions.)
- Limits of travel for the shade or blind are preset at the factory. Using your test cable, run motor to ensure proper functioning of system. If system is running smoothly, connect motor to existing prewire or other plug in controls that would normally arrive with motorized systems.



Coupling TRS Systems

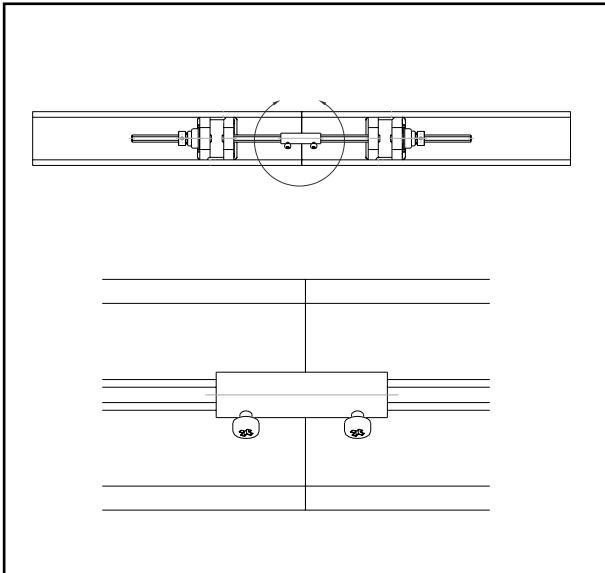
For Straight or Angle Coupled Shades or Blinds

The TRS Coupled System that has been custom built for you has three main components:

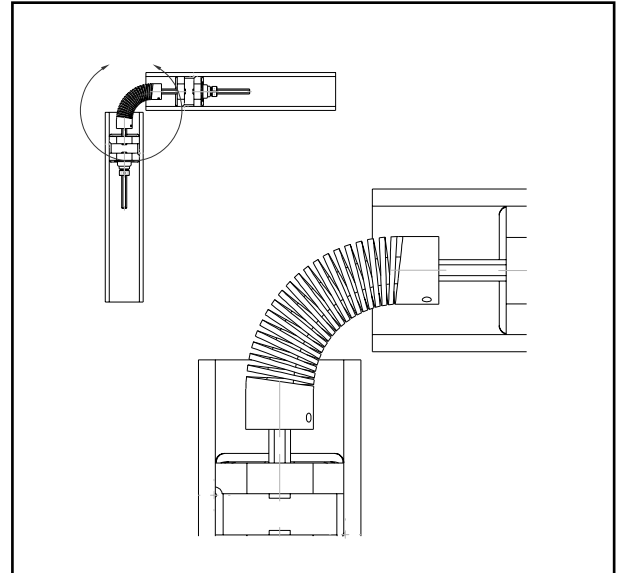
1. Motor System
2. Coupled Shade/Blind
3. Coupler

The hex shaft of the motor system and on the coupled system will be marked to indicate when the coupler (whether straight or angled) should be placed. Once coupler has been attached to each shaft, make sure set screws are tightly screwed down so that coupler will not vibrate off the shafts.

Straight Coupler



Angled Coupler



NOTE: The coupler will be hidden inside the headrail once the system has been completely installed.

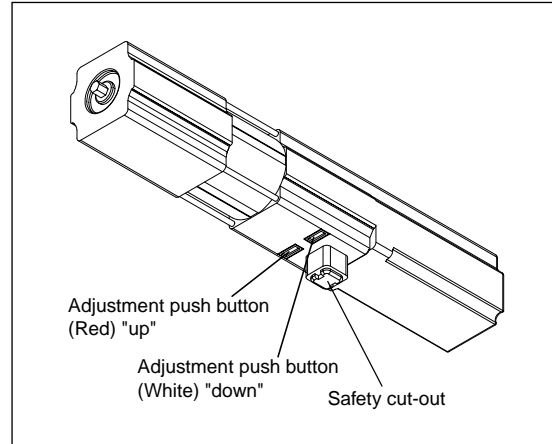
Limit Adjustment Instructions

The venetian blind motor is set at the factory to the lower end position.

Adjustment of the upper end position:

1. Run venetian blind in “up” direction. Approximately 0.5 m before reaching the end position press in red adjustment push button for “up” direction and keep it pressed for approximately 2 turns. Release the button to stop the motor. It is now possible by repeatedly pressing the red adjustment button to exactly run the motor to the desired upper end position.

2. Usually, due to the standard pre-setting at the factory, an adjustment of the lower end position is not necessary. If required, however, adjustment is carried out in accordance with instructions given above: Run venetian blind in “down” direction. Approximately 0.5 m before reaching the end position press in white adjustment push button for “down” direction and keep it pressed for approximately 2 turns. Release the button to stop the motor. It is now possible by repeatedly pressing the white adjustment button to exactly run the motor to the desired lower end position.



Readjustments:

1. If the limits have not been exactly adjusted to the desired end positions or if the winding behavior has changed, the end positions must be readjusted as described above. For this, run the venetian blind to a position approximately 0.5 m ahead of the desired end position and repeat adjustment procedure. The maximum limit switch range is 85 turns.

Maintenance for TRS Systems

The BTX Window Automation TRS Lift and Lift/Tilt system for horizontal blinds and soft shades are designed to be virtually maintenance free. The motor and all moving components are self lubricating.

Shades should be inspected periodically to insure mounting brackets remain securely attached to the mounting surface.

Shades should be level, and path of travel should remain free of any obstructions.

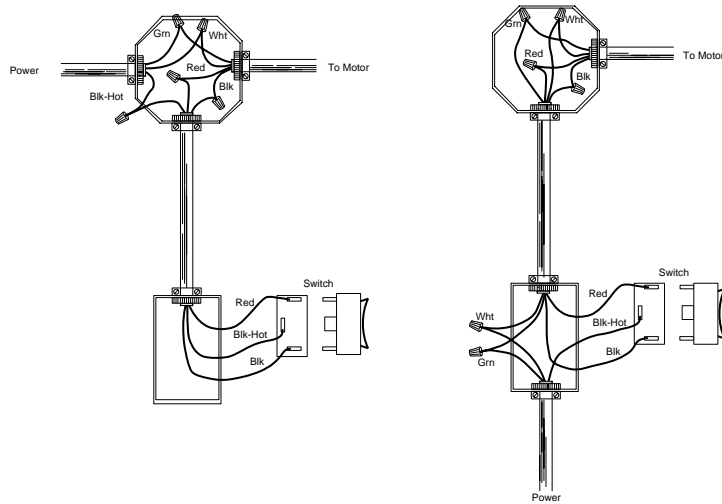
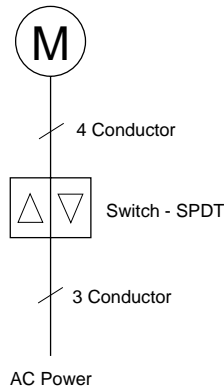
COM materials attached to the motorized system can be cleaned according to the specific manufacturers recommendations, however under no circumstances should the motor or hardware be subject to immersion in water.

Basic Wiring

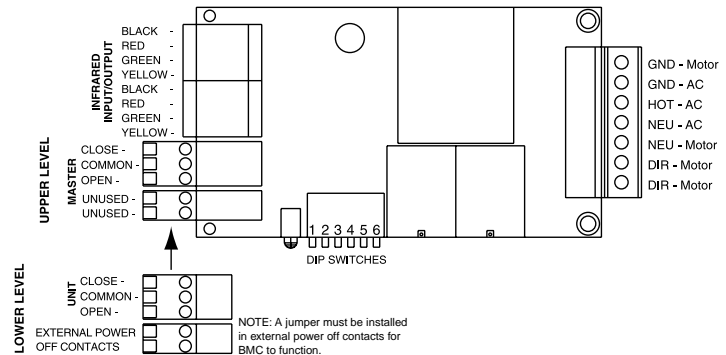
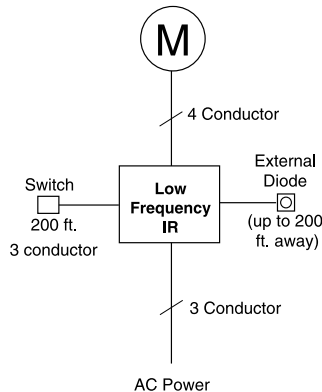
Switch Control Option

Illustrated below is the basic wiring diagram for the TRS Lift/Tilt system.

Caution! Due to the risk of feedback voltage from the capacitor, do not connect motors in parallel!



Infrared Remote Control Option



The BMC-12 uses a total of twelve different channels, corresponding to the twelve-channel remote handsender. To program your receiver using the easy dip switches, follow the chart to the right:

Channel Setting

Dip Switches	3	4	5	6
Channel 1	Off	Off	Off	On
Channel 2	Off	Off	On	Off
Channel 3	Off	Off	On	On
Channel 4	Off	On	Off	Off
Channel 5	Off	On	Off	On
Channel 6	Off	On	On	Off
Channel 7	Off	On	On	On
Channel 8	On	Off	Off	Off
Channel 9	On	Off	Off	On
Channel 10	On	Off	On	Off
Channel 11	On	Off	On	On
Channel 12	On	On	Off	Off

Manual Switch Style

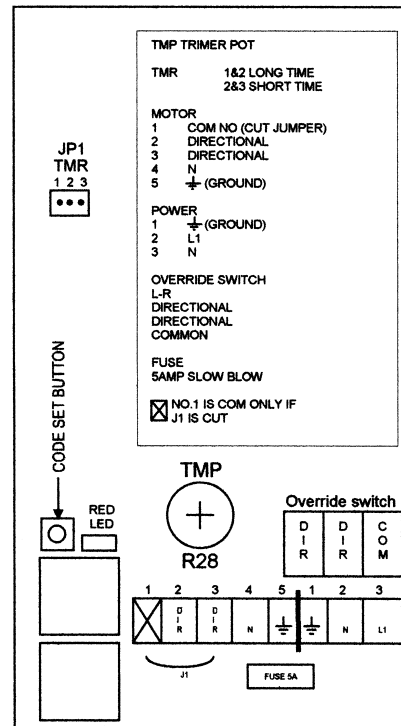
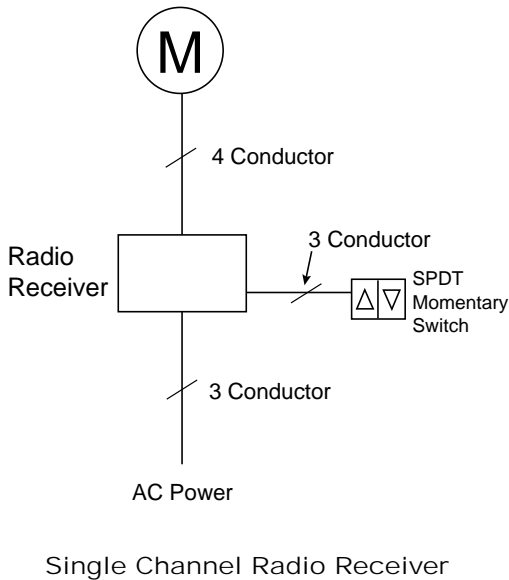
Mode	1
Double Throw	On
Single Throw	Off

Motor Motion Setting

Mode	2
Full Motion	On
Jog/Latch	Off

Basic Wiring

Radio Remote Control Option



1. Select the desired frequency using the dip switches under cover of transmitter. (Do not set all dip switches all "up" or all "down".)
2. Press "code set button" and HOLD while pressing transmitter button (left button for directional handsender).
3. When LED starts flashing every 1/2 second, release transmitter button.
4. Release "code set button".
5. Test unit by pressing either the "open" or "close" buttons. (These are the outside two buttons on transmitter.)

Warranty & Return Policy

Motorized Systems

ROLLER AND LIFT SYSTEM MOTORS, HARDWARE AND CONTROLS PURCHASED FROM BTX.

1. All tubular and lift system motors and hardware purchased from BTX are warranted against defects in materials and workmanship for five years from the date of shipment from the Dallas factory of BTX. All electrical and electronic controls purchased from BTX are warranted against defects in materials and workmanship for two years from the date of shipment from the Dallas factory.
2. Should any failure to conform with this warranty appear during the specified period under normal and proper use, and provided that the motors, hardware or controls have been properly stored, installed and maintained with due regard to any directives, instructions and operating procedures provided by the manufacturer, BTX shall, upon presentation of proof of purchase, correct such nonconformity either by repair or by replacement of the nonconforming part, F.O.B. factory, at the option of BTX. Return of motors, hardware or controls pursuant to this paragraph shall be at purchaser's risk and expense.
3. BTX warrants motors, hardware and controls repaired or replaced pursuant to the foregoing warranties, under normal and proper use, storage, installation and maintenance, against defects in materials and workmanship for a period of 30 days from date of start-up of such repaired or replaced motors, hardware or controls or the expiration of the original warranty, whichever is longer.

The foregoing warranties do not cover defects resulting from misuse or failure to follow instructions. They also do not cover any incidental or consequential damages, labor on location, service calls, reinstallation or expenses involved in shipping, packing or returning goods. They do not cover misuse or abuse, damages caused by fire, flood, etc. Any alteration or repair other than by a factory authorized person will invalidate this warranty.

IN NO EVENT SHALL BTX BE LIABLE FOR ANY INDIRECT, INCIDENTAL, CONSEQUENTIAL OR OTHER DAMAGES IN CONNECTION WITH THIS PRODUCT. THIS DISCLAIMER APPLIES BOTH DURING AND AFTER THE PERIODS OF THESE WARRANTIES.

THE FOREGOING WARRANTIES ARE EXCLUSIVE AND IN LIEU OF ALL OTHER WARRANTIES, WHETHER WRITTEN, ORAL OR IMPLIED. ALL OTHER WARRANTIES, INCLUDING ANY WARRANTY OF MERCHANTABILITY OR FITNESS FOR A PARTICULAR PURPOSE, ARE HEREBY DISCLAIMED. Correction of nonconformities as provided above shall be purchaser's exclusive remedy and shall constitute fulfillment of all liabilities of BTX, whether in warranty, contract, negligence, tort or otherwise, with respect to the equipment or part delivered hereunder. In no event shall BTX be responsible for providing working access to the defect, including disassembly or reassembly of motors, hardware or controls.

Return Policy

As a rule, BTX products are customized and cannot be returned. Any goods to be returned to the BTX factory for repair, credit or otherwise require prior authorization and must be clearly marked with the RGA (Return Goods Authorization) number issued by the BTX customer service department. No returned goods will be accepted unless clearly marked with an RGA number. Any return shipment to BTX must be freight prepaid. All shipments from the BTX factory will be made F.O.B., freight collect, best way, unless arranged otherwise. Final acceptance of returned goods is subject to factory inspection. Restocking charges will apply.

12/99